

ATHENS

OPERATOR'S MANUAL

SET-UP INSTRUCTIONS

and

Repair Parts List

for

287

Offset Disk Harrow

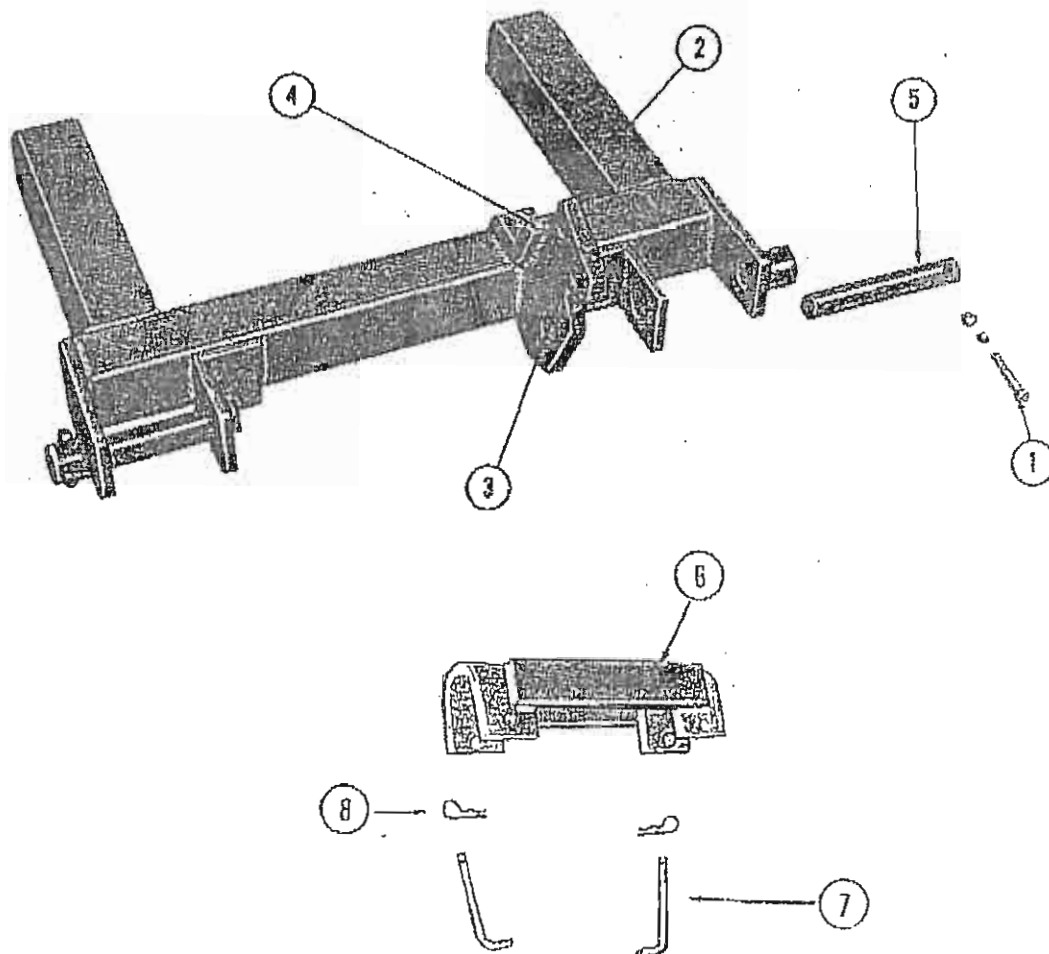


ATHENS PLOW COMPANY, INC.
P.O. BOX 609
ATHENS, TENNESSEE 37303



Parts Listing

Section 5



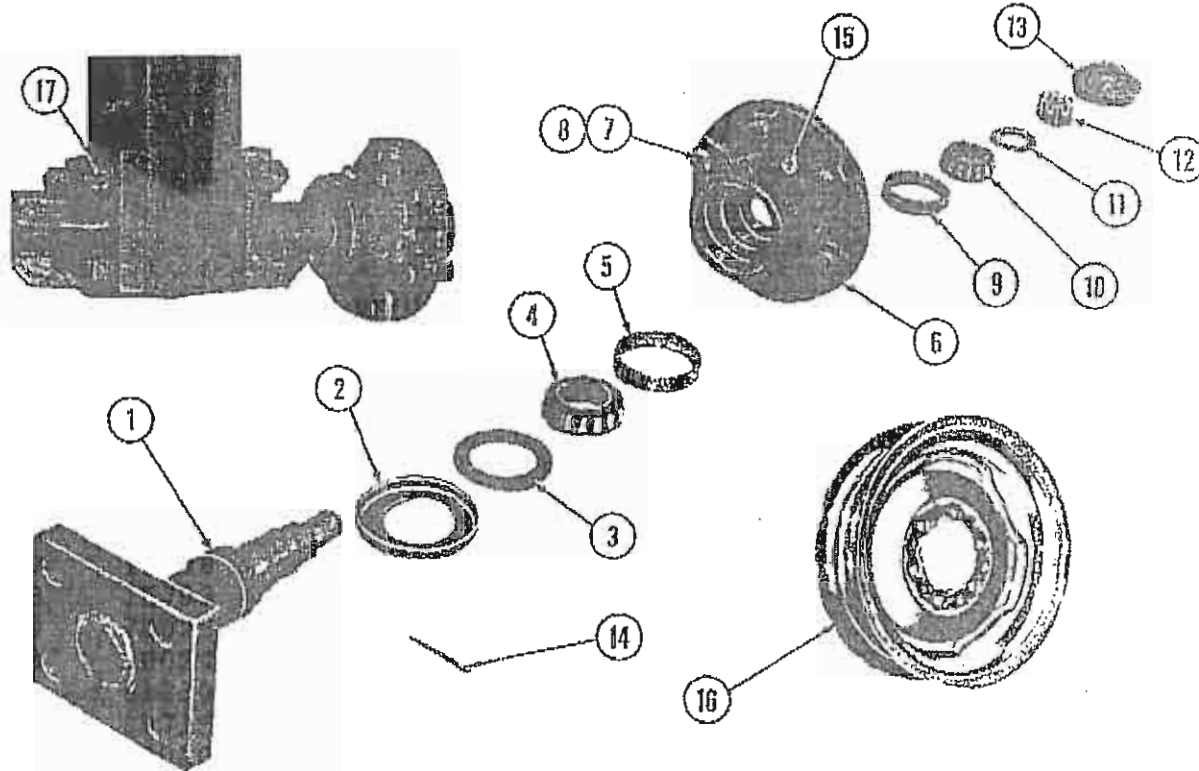
WHEEL CARRIAGE AND TRANSPORT PARTS

REF.	PART NO.	REQ'D	DESCRIPTION
1	80222	2	Bolt, 1/2 x 3-1/2"
	80864	2	Lock Nut, 1/2"
2	23087	1	Wheel Carriage Assy.
3	21953	1	Bushing
4	11610	1	Grease Fitting, 1/8" NPT
5	19286	2	Pivot Pin, 2 x 11-1/2"
6	19788	1	Transport Assy.
7	19778	1	Transport Safety Pin
8	19791	2	Quick Hitch Pin



Parts Listing

Section 5



WHEEL AND WHEEL HUB

<u>REF</u>	<u>PART NO.</u>	<u>REQ'D</u>	<u>DESCRIPTION</u>
1	19022	4	Wheel axle
2	19019	4	Flinger
3	19021	4	Seal, Triple Lip
4	70002	4	Bearing Cone
5	70000	4	Bearing Cup
6	900076	4	Wheel Hub w/cups & Bolts (6 lug)
7	13198	24	Wheel Bolt
8	15793	24	Nut, Wheel Bolt
9	70025	4	Bearing Cup
10	70024	4	Bearing Cone
11	81230	4	Washer, 1"
12	80715	4	Nut, 1" slt. NPT
13	19020	4	Hub Caps
14	81360	4	Cotter, 3/16 x 1-1/2"
15	11610	4	Grease Fitting 1/8"
16	18184	4	Wheel, 6 Lug
17	19016	8	Wheel Axle Bolt 3/4" x 7-3/4"
	80620	16	Nut, 3/4"
	81020	16	Lock Washer, 3/4"

Parts Listing

Section 5

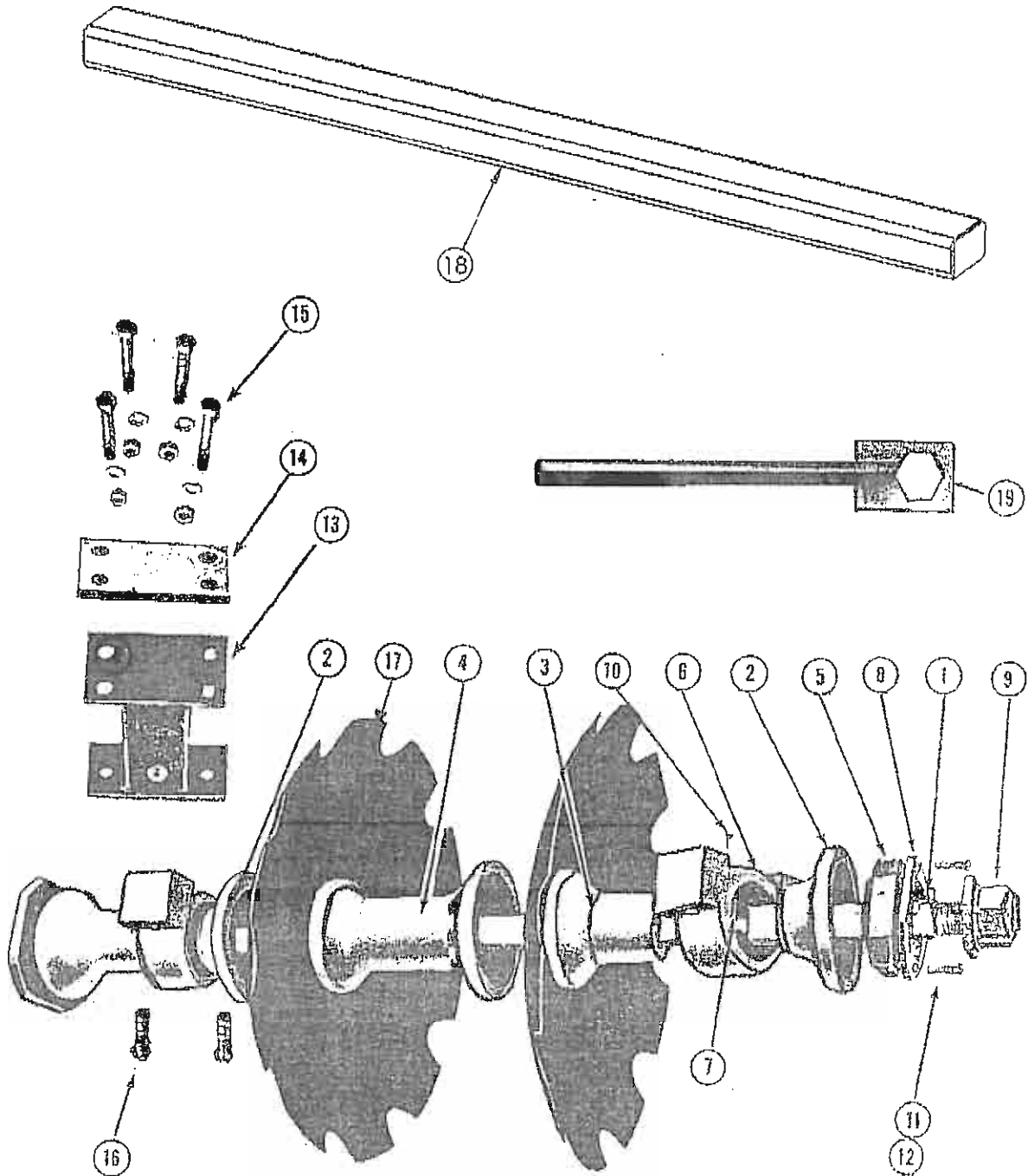
DISK GANG PARTS

Ref.	Part No.	17 Disc	19 Disc	21 Disc	Description
1	17894	3	2		2" Sq. Axle, 40.12" (4 Disc)
	17895		1	3	2" Sq. Axle, 52.12" (5 Disc)
	23115	1			2" Sq. Axle C.D., 52.12" (5 Disc)
	23116		1	1	2" Sq. Axle C.D., 64.12" (6 Disc)
2	17883	8	8	8	Concave Half Spacer
3	17884	8	8	8	Convex Half Spacer
4	17885	5	7	9	Full Spacer
5	17882	4	4	4	End Washer
6	17275	8	8	8	Bearing Housing
7	70510	8	8	8	Ball Bearing, 2" Square
8	17888	4	4	4	Nut Lock
9	17897	4	4	4	Disc Assembly Nut
10	11649	8	8	8	Grease Fitting
11	80108	4	4	4	Hex Bolt, 1/2 x 1 1/4"
12	81000	4	4	4	Lockwasher, 1/2"
13	23089	8	8	8	Bearing Hanger
14	23091	8	8	8	Top Plate
15	80214	32	32	32	Hex Bolt, 1 x 7"
	80685	48	48	48	Hex Nut, 1"
	81040	48	48	48	Lockwasher, 1"
16	80211	16	16	16	Hex Bolt, 1 x 5 1/2"
17	23120				32" x 3/8" Disc Blade, CO
	15302				30" x 3/8" Disc Blade, CO
	15154				28" x 3/8" Disc Blade, CO
	23118				26" x 1/4" Disc Blade, CO
	23119				24" x 1/4" Disc Blade, CO
18	23565	1			Gang Frame, 4 x 6 x 3/8 x 91.50"
	23567	1	1		Gang Frame, 4 x 6 x 3/8 x 103"
	23125		1	1	Gang Frame, 4 x 6 x 3/8 x 115"
	23569			1	Gang Frame, 4 x 6 x 3/8 x 127"
19	23112	1	1	1	Gang Wrench



Parts Listing

Section 5



Parts Listing

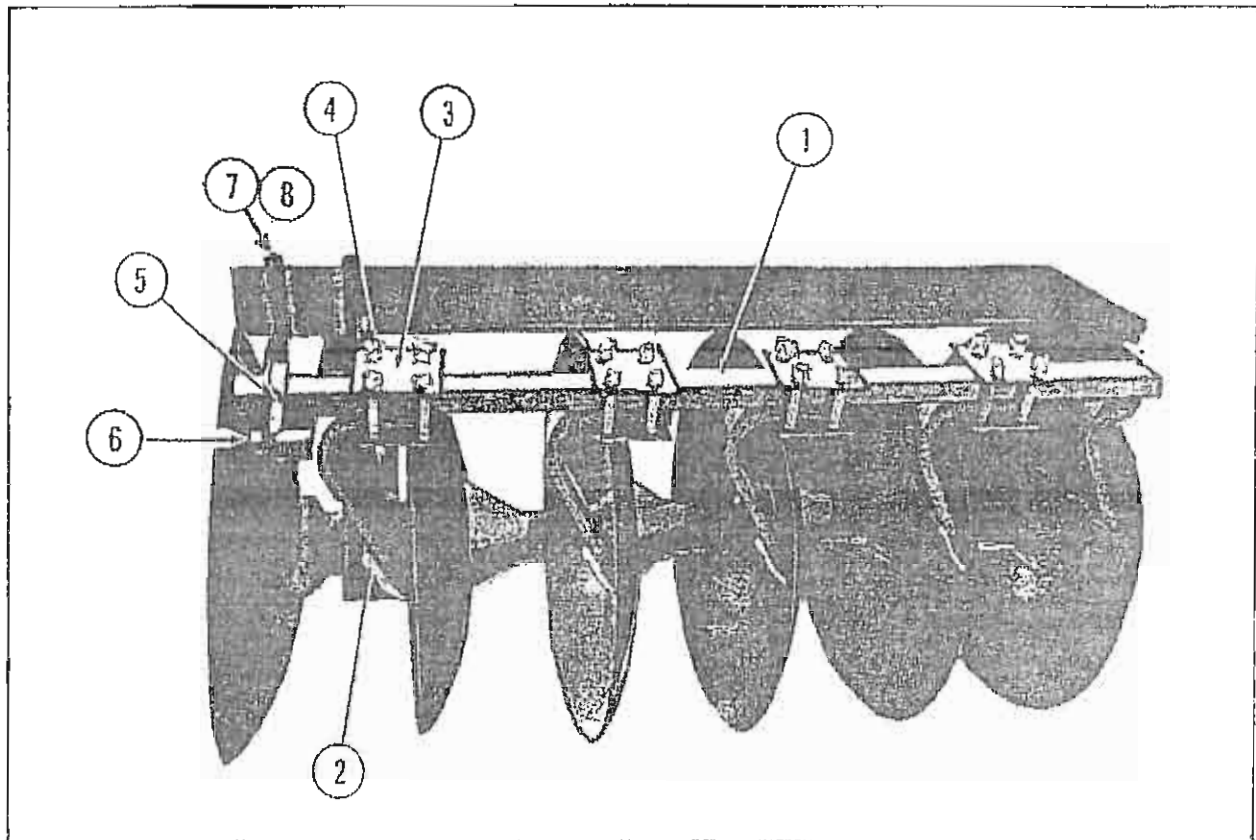
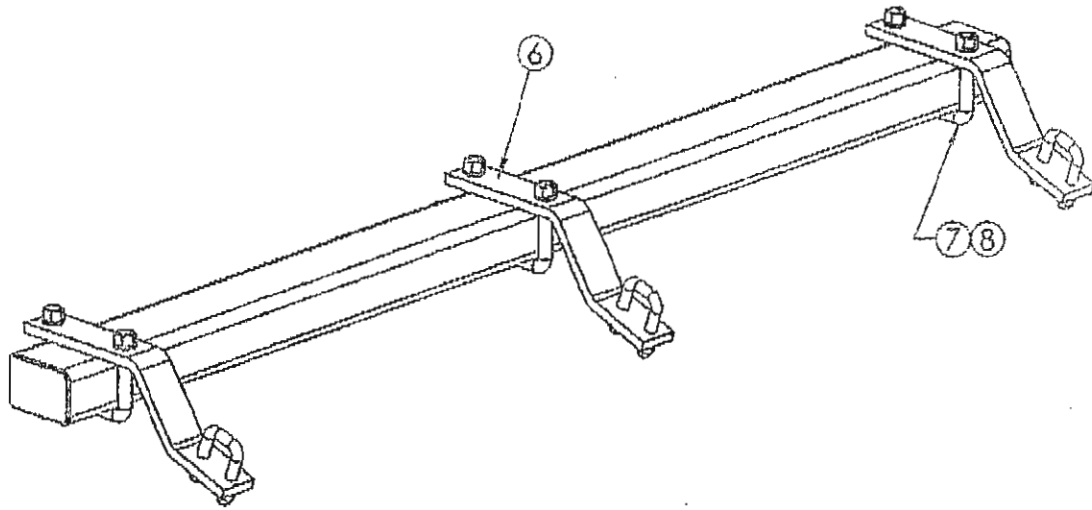
Section 5

SCRAPERS AND SCRAPER BARS

Ref.	Part No.	17 Disk	19 Disk	21 Disk	Description
1	23305	1			Scraper Bar 91"
	23306	1			Scraper Bar 110"
	23307		1		Scraper Bar 103"
	23308		1		Scraper Bar 122"
	23309			1	Scraper Bar 119"
	23310			1	Scraper Bar 136"
2	23292	7	8	9	Scraper, Right
	23293	8	9	10	Scraper, Left
3	23290	16	18	20	Scraper Top Plate
4	80335	64	72	80	Carriage Bolt 1/2" x 3-1/2"
	80590	64	72	80	Hex Nut 1/2"
	81005	64	72	80	Lockwasher 1/2"
5	19164	6	6	6	Scraper Bar U-Bolt (3/4" x 2-7/8" x 4-1/16")
	80620	12	12	12	Hex Nut 3/4"
	81020	12	12	12	Lockwasher 3/4"
6	23246	6	6	6	Scraper Bar Hanger
7	19559	6	6	6	Scraper Bar Hanger U-Bolt (7/8" x 6-15/16" x 5-3/4")
8	80645	12	12	12	Hex Nut 7/8"
	81030	12	12	12	Lockwasher 7/8"

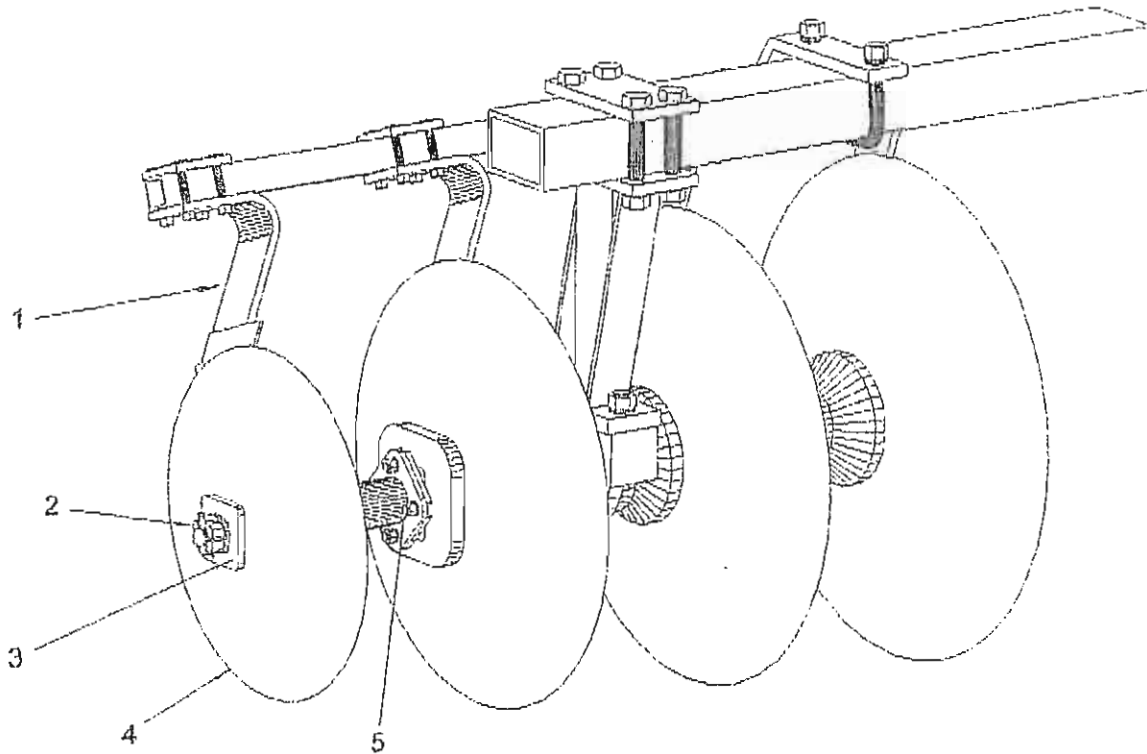
Parts Listing

Section 5



Parts Listing

Section 5



COVER DISK PARTS

Reference	Part No.	Required	Description
1	23294	1	Right Cover Disk Scraper
2	17099	1	Disk Assembly Nut
	81375	1	3/16" x 2-1/2" Cotter
3	17873	1	Cover Disk End Washer
4	15620	1	22" Cover Disk Blade
5	17877	1	Cover Disk Mounting Assembly
	80321	4	Carriage Bolt 1/2" x 1-1/2"
	80585	4	Hex Nut 1/2"
	81000	4	Lockwasher 1/2"